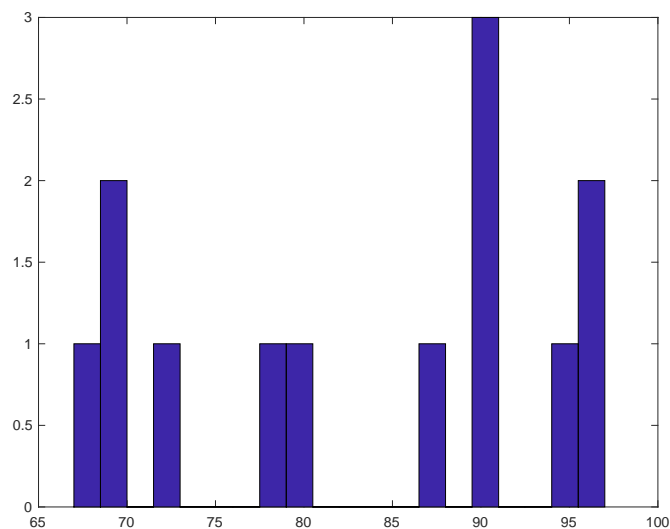


## Summary of Quiz 2 and Second Midterm Grades

**Quiz 2 grades.** 13 students remain in the class after taking 18-491/691 Quiz 2. Of these students, the mean score was 83.3, about 10 points higher than Quiz 1. The standard deviation was 11.1, a bit lower than that of Quiz 1. The exam grades ranged from 67 to 97. A histogram of the Quiz 2 scores is plotted below:



**Second midterm grades.** The second midterm grades were calculated by computing  $1/3$  times the average of the first seven homework grades, dropping the lowest grade, plus  $2/3$  times average of the grades for Quizzes 1 and 2. The mean midterm score was 82.0 and the standard deviation was 7.8.

Letter grades were computed using the following rather arbitrary cutoffs based on the rounded midterm scores, looking for locations in the histogram where there were larger gaps between adjacent scores:

- A: 85 and up
- A-: 82-84

- B: 70 to 81

Here is the distribution of the second midterm grades:

