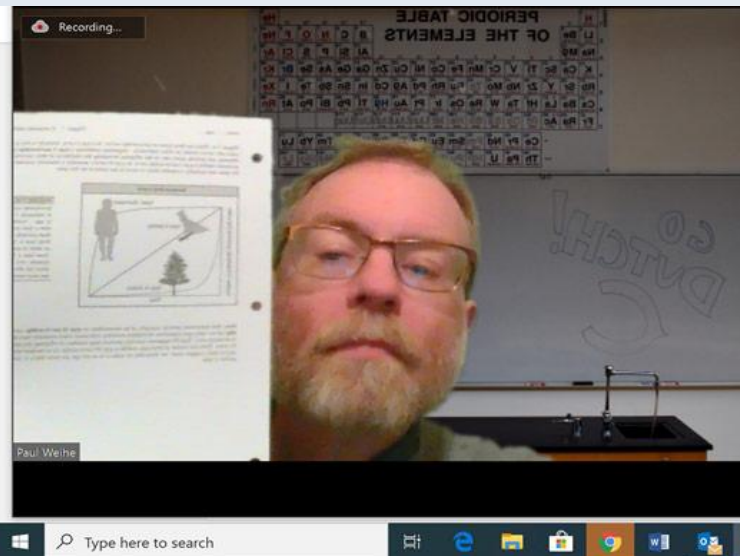




# Magic Mice

Bradley, Jenny, Jade





# Use Cases



**Education**



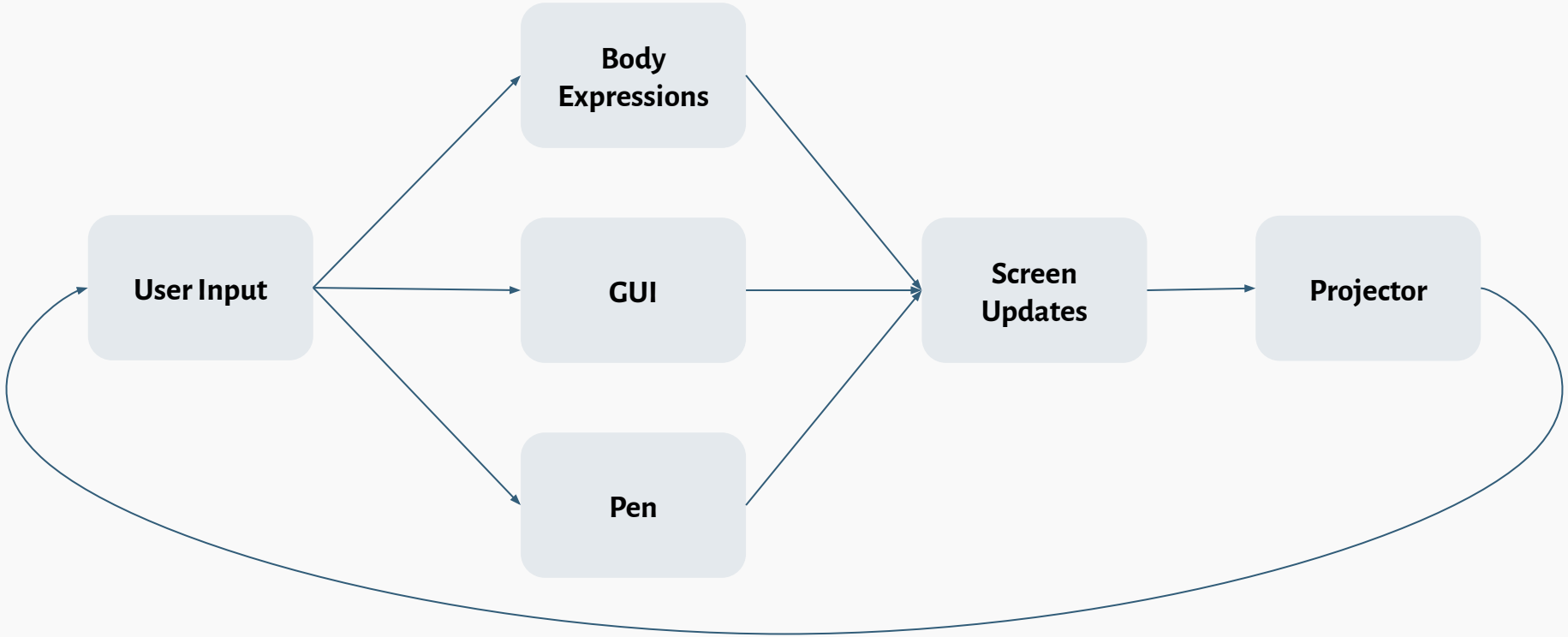
**Professional**



**Personal**



# Our System



# Requirements



## Pen

left/right click  
left click drag  
6 inches distance to wall



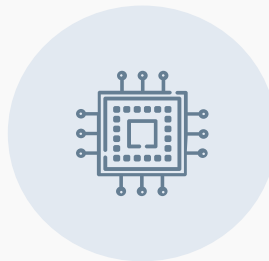
## Projector

10 ft  
1280x1024  
GUI



## Body Expressions

3 default gestures  
Custom gestures



## System

MacOS  
100ms Response Time  
125 Hz Polling Rate

# Challenges/Mitigation Plan



## Speed

OpenPose large  
processing power



## UX

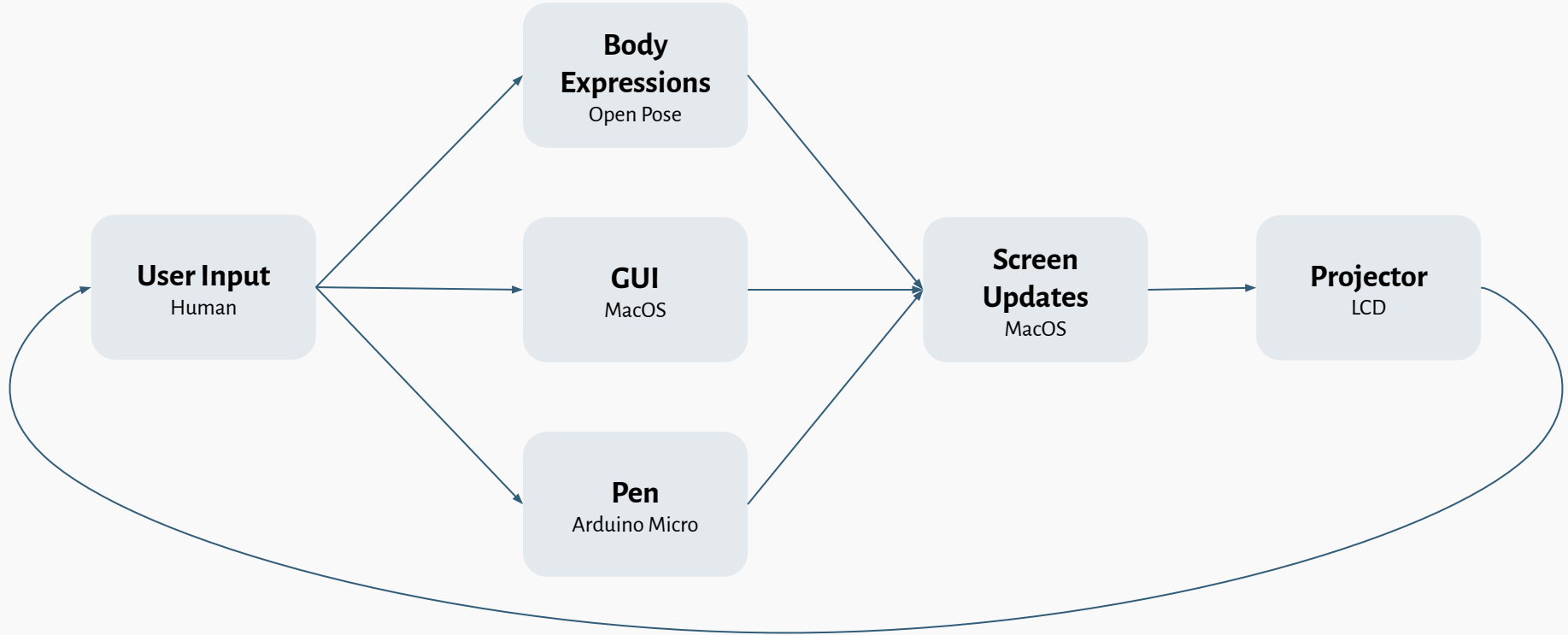
Small pen size  
Easy calibration



## Teamwork

Remote group

# Solution Dataflow





# Testing, Verification, Metrics



## Pen

Test individual sensor readings  
Unit testing software based on mocked input values



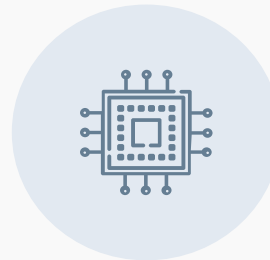
## Projector

Clock response time



## Body Expressions

Multiple people test  
Unit Tests



## System

Clock Response Time  
Clock Polling Rate

# Division of Labor



## Bradley Zhou

---

In Pittsburgh, assemble/test pen with Jade.  
Work on pen tracking software



## Jade Wang

---

In Pittsburgh, assemble/test pen with Bradley. Connect projector to laptop. Wire bluetooth piece to connect with laptop

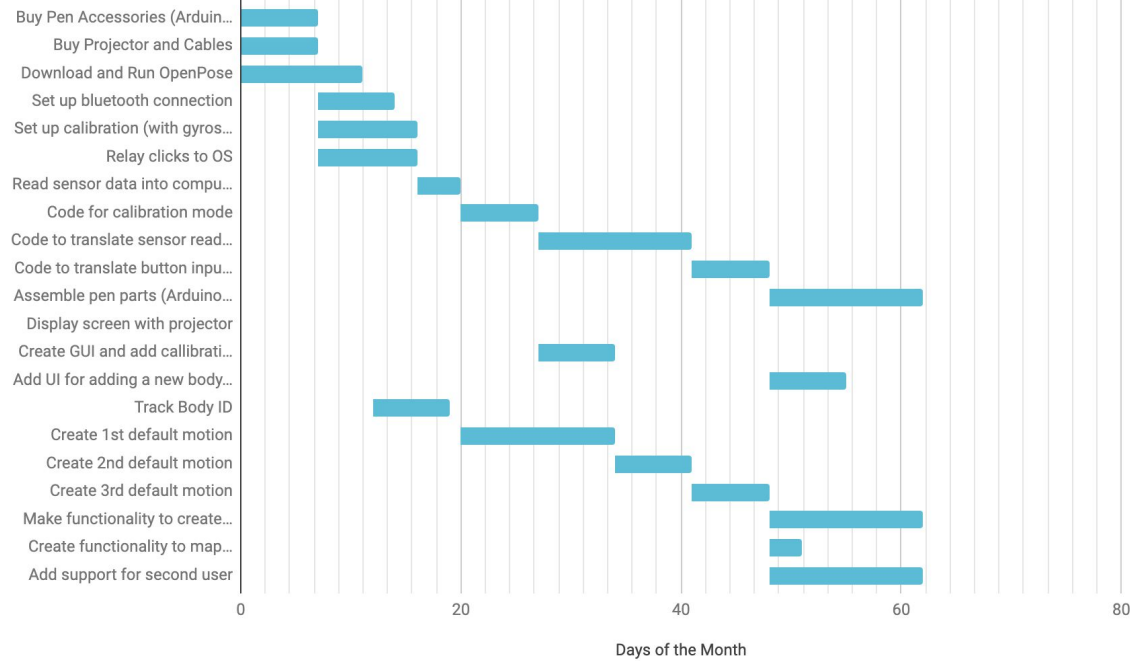


## Jenny Han

---

In California, work on OpenPose while remote. Work together on pen + projector+system when back

# Schedule



Educators

---

Professionals

---

Entertainment

---

# Thank you!

---

Questions?