

# mesa

a meeting table

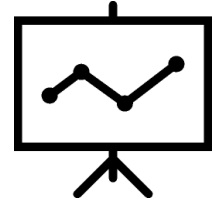


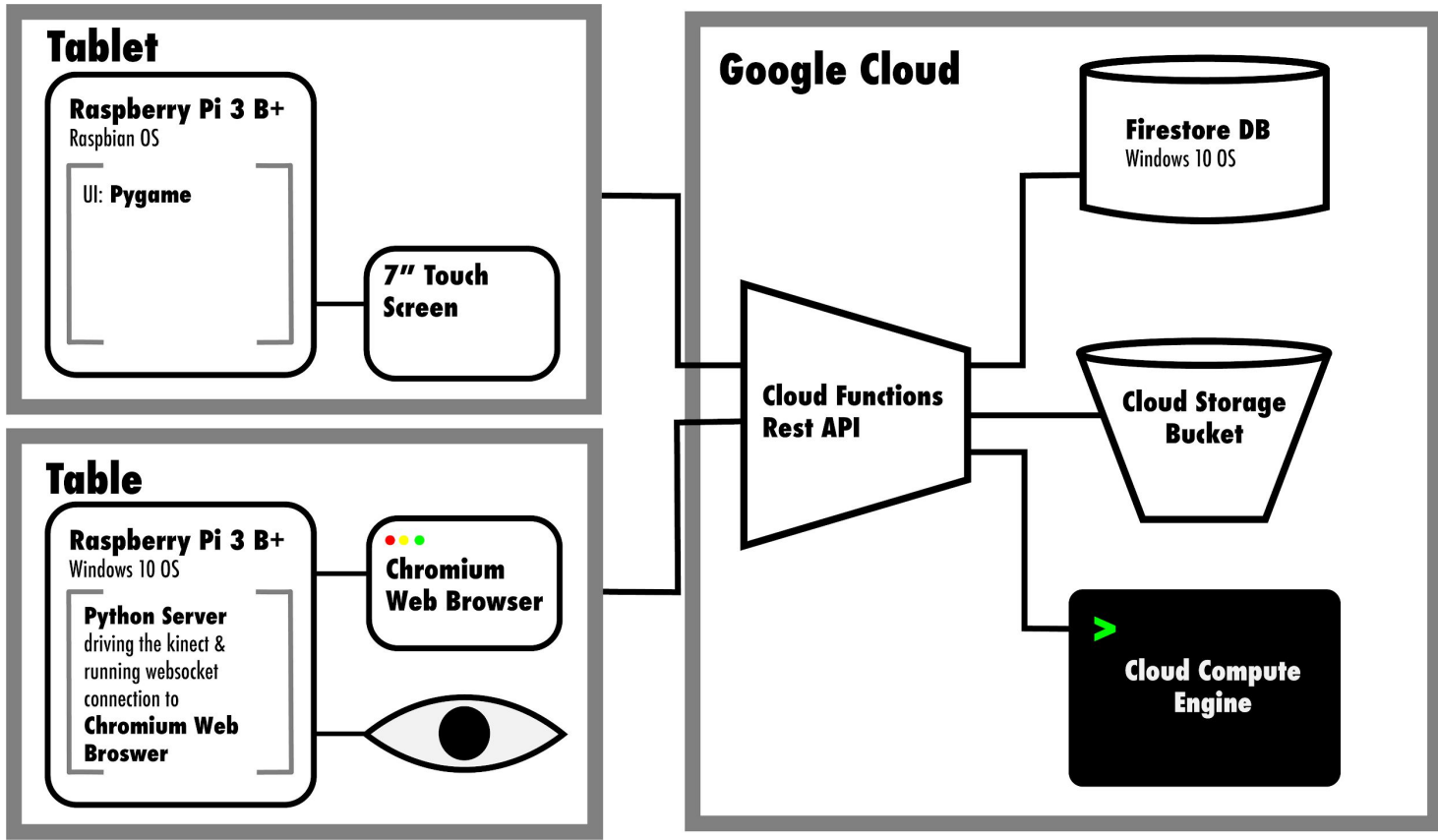
# mesa: **the problem**

1. collaboration
2. communication
3. record keeping

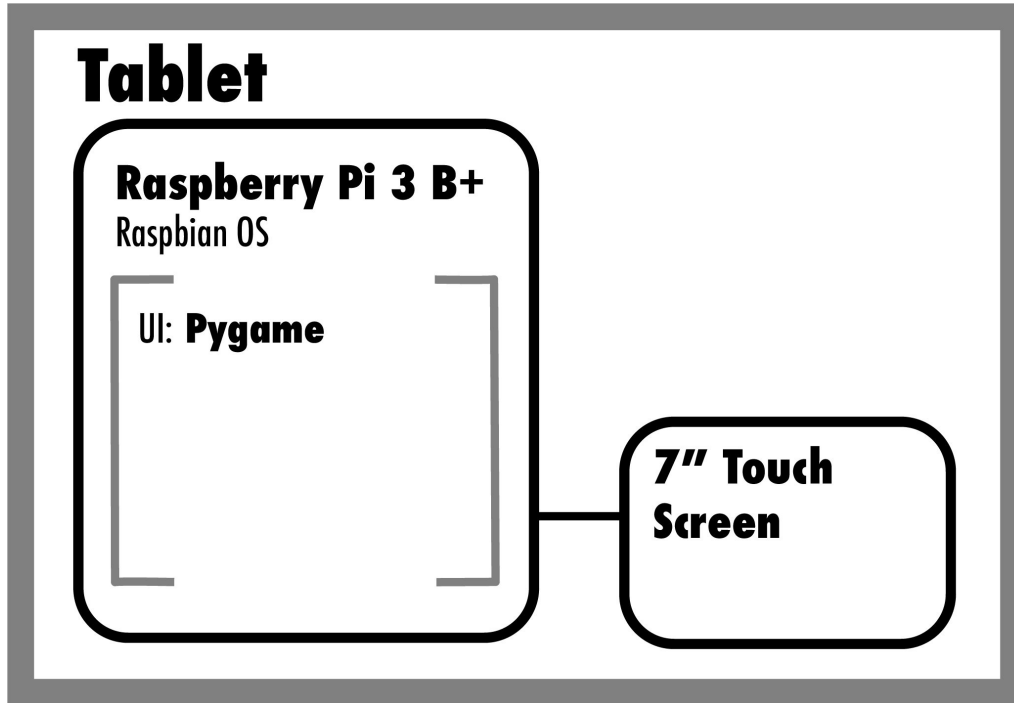


# mesa: **the use-case**

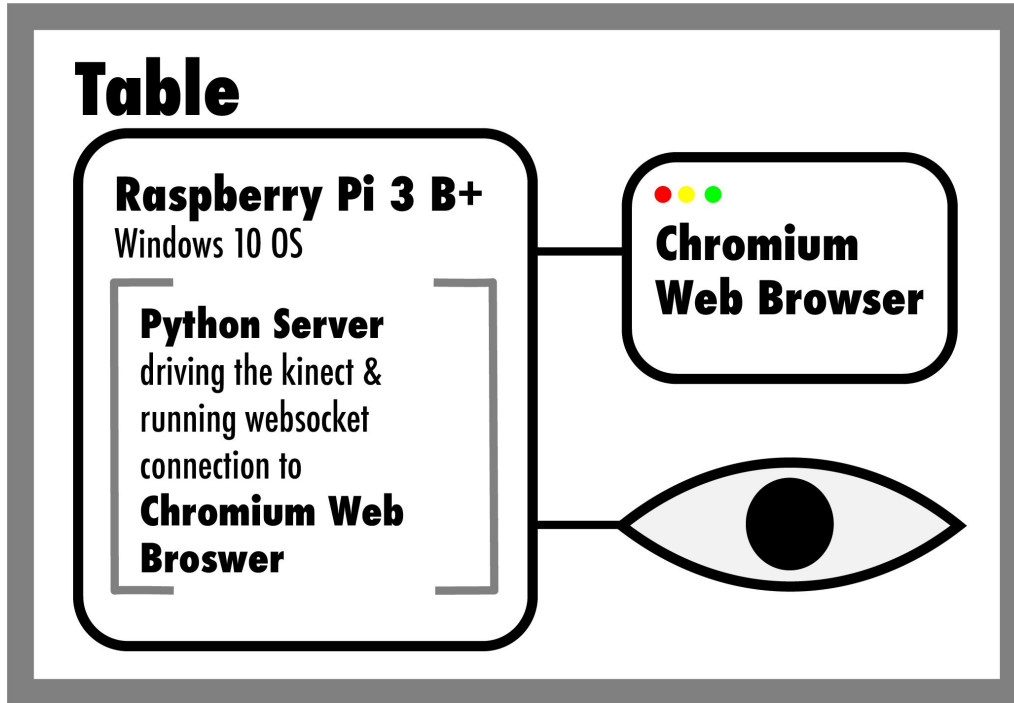




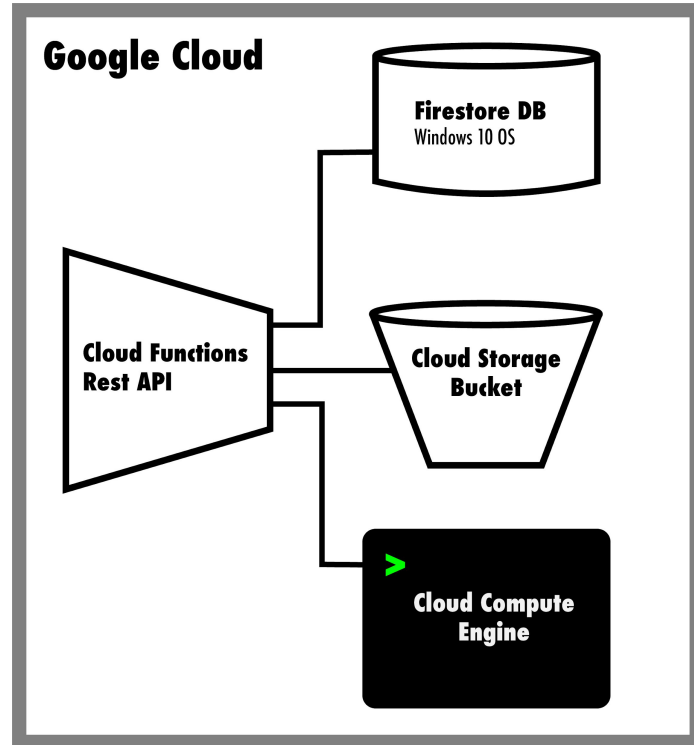
# mesa: implementation plan



# mesa: implementation plan



# mesa: implementation plan



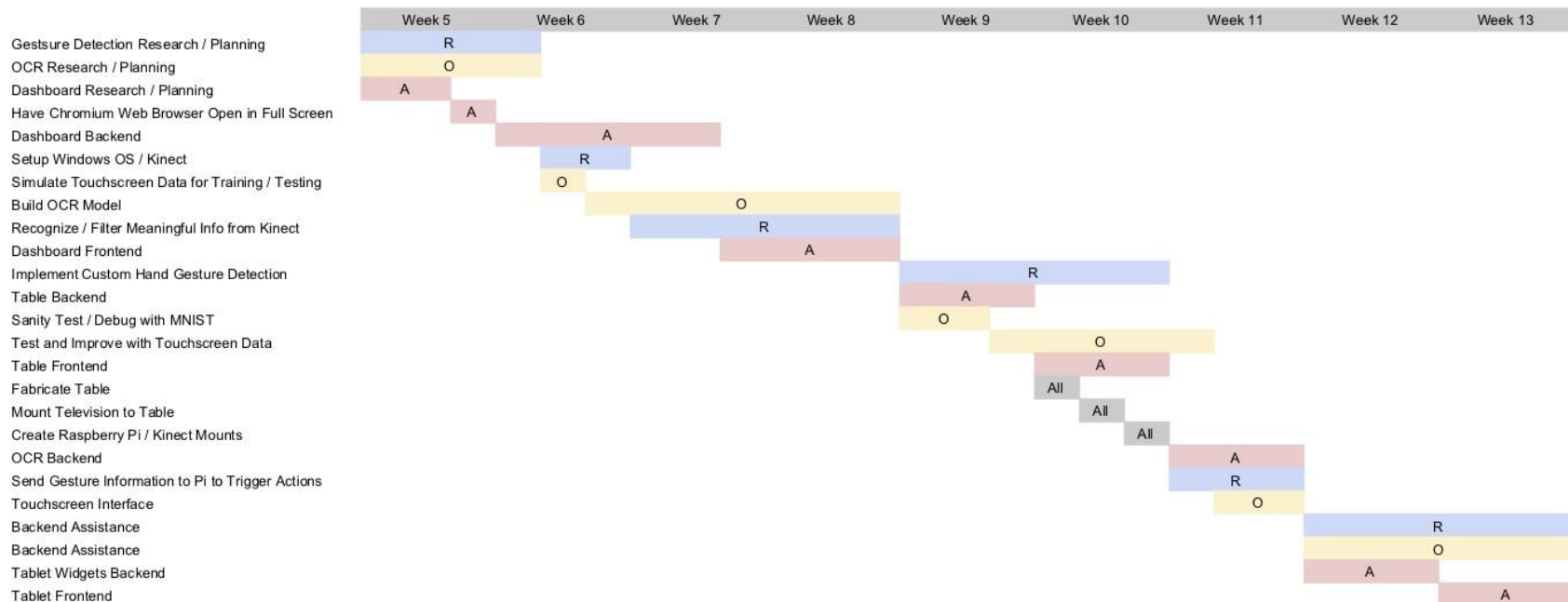
# mesa: **metrics and validation**

- Segment words with 95% accuracy
- Classify letters with 90% accuracy
- Manage hand gestures for up to 4 collaborators at a time
- End to end latency of less than 2 seconds





# mesa: schedule



# mesa: **division of labor**

**Raunak**

Kinect

Hand Gesture  
Recognition

**Olly**

OCR

Touchscreen UI

**Arman**

Cloud Architecture

Table / Tablet UI

System Integration

---

QA